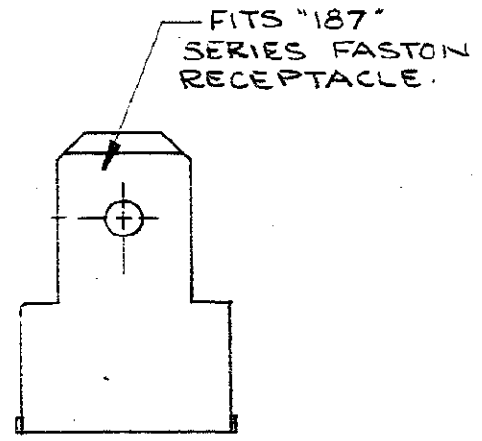
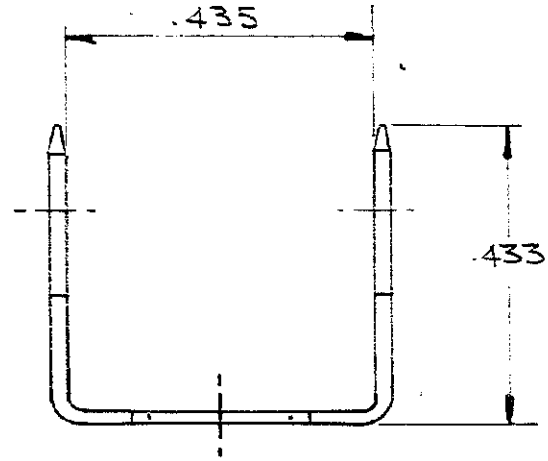
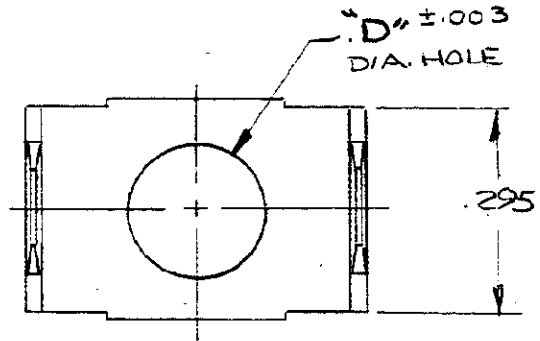


DRAWING MADE IN AMERICAN PROJECTION

NUMBER  
61914

S



This terminal to be supplied in individual form, not as continuous strip.

TERMINAL NUMBER	MATERIAL AND FINISH	"D" HOLE
61914-1	BRASS-TIN	.197
<del>61914-2</del>	<del>.020 ±.001 BRASS-TIN</del>	<del>.145</del>

DIMENSIONS IN INCHES. DO NOT SCALE PRINT.

©1970 BY AMP INCORPORATED. ALL RIGHTS RESERVED. AMP PRODUCTS COVERED BY PATENTS AND/OR PATENTS PENDING.

**CUSTOMER COPY REFERENCE ONLY**

MATERIAL AND FINISH

**TE** TE Connectivity

CLASS

WIRE RANGE INSULATION TYPE

TOLERANCE EXCEPT AS NOTED ±.015 ±1°

LOC AF A NO 61914 REV D

D	ECR-13-011489	KH	PD	11DEC13
ATR	REVISION RECORD	ECN	DR	DATE
DR	4-24-70	DE		
CHK	C-MEYERS	APP	4-24-70	

NAME TAB "187" SERIES FASTON